

A woman with braided hair and a young boy are sitting on a couch, smiling and taking a selfie with a smartphone. The woman is holding the phone up, and the boy is looking at the camera. The background is a simple living room with a white wall and a framed picture.

Cinagi

2025 | Gap Cover

UNDERWRITTEN BY

Anfiniti
insurance

Although you and your family have medical scheme cover, unexpected medical costs can arise when your medical scheme only refunds you a portion of what your doctors have charged you for treatment.

Cinagi Gap Cover is the industry leading solution giving you comprehensive financial protection against these unforeseen medical costs.

FEATURES OF CINAGI

Gap Cover

IN-HOSPITAL COVER

Comprehensive protection against shortfalls in your medical scheme cover for medical specialists and surgeons

ONCOLOGY COVER

Our oncology cover offers you the most comprehensive industry-leading protection against oncology co-payments and tariff shortfalls

CASUALTY COVER

Provides cover for emergency treatment at a casualty facility for accidents plus an additional rehabilitation benefit for sports injuries

UPFRONT PAYMENTS

Full cover for upfront payments or deductibles on diagnostic and surgical procedures

AFFORDABLE PREMIUMS

Starting at just R235 for **Gap^{MAX}** and R221 for **Gap^{CORE}**, you get industry leading protection at competitive premiums

TRAVEL COVER

We will cover the excess payable on your travel insurance policy for claims on medical emergencies whilst travelling internationally

CLAIM OPTIMISER

Don't be out of pocket - our Claim Optimiser will guarantee upfront payments to providers, meaning no out-of-pocket costs for you



Features

Cover
Summary

Cover
Explained

Premiums

Member
Service Portal

Terms &
Conditions



This policy is not a medical scheme and the cover is not the same as a medical scheme. This policy is not a substitute for medical scheme membership.

Your Gap Cover

A QUICK SUMMARY



BENEFIT CATEGORY	GAP COVER BENEFIT DESCRIPTION [Ⓐ]	2025 BENEFIT AMOUNTS AND LIMITS	
		Gap ^{MAX}	Gap ^{CORE}
Overall annual limit (OAL) per insured person *		R210,500	R210,500`
Tariff Shortfalls	We cover medical specialists for treatment or surgery provided in hospital	Cover Enhancement up to 600%	Cover Enhancement up to 500%
	We cover medical oncologists for treatment provided in or out of hospital		
	We cover medical specialists for out-patient procedures that would otherwise attract a co-payment if such procedure was performed in hospital		
	We cover gynaecologist and/or paediatrician consultations from the 2nd trimester to 90 days post-delivery		
Oncology Co-Payments[#]	We cover the 20% co-payment after reaching the oncology threshold	100% Cover	100% Cover
	We cover co-payments on approved precision medicines	R17,500 per claim	R14,500 per claim
	We cover co-payments applied on ex-gratia benefits for precision medicines		
Upfront Payments	We cover the upfront payment applied as a fixed rand value to MRI/CT/PET scans, in-hospital endoscopes, in-hospital basic dentistry and defined procedures	100% Cover	100% Cover
	We cover other upfront payments (including robotic surgery)	R26,000 per event	R16,000 per event
	We cover upfront payments for voluntary use of a non-network hospital or clinic	R20,000 per event Max 2 pa	R14,000 per event Max 1 pa
Limit Extender	We cover shortfalls when a sub-limit applies to an internal prosthetic device	R70,000 per event	R50,000 per event
	We cover shortfalls when a sub-limit applies to MRI/CT/PET scans, endoscopes or intra-ocular lenses	R8,200 per event	R6,500 per event

[Ⓐ] - For all Gap Cover Benefits, claims can only be paid where a shortfall exists between the medical scheme benefit and the charged amount | * - The statutory overall annual limit (OAL) for all Gap Cover Benefits is **R210,500** per insured person per annum. This limit will automatically increase from **1 April 2025** in line with CPI | [#] - All oncology cover categories include treatment using new generation biologicals/immunotherapies (i.e. precision medicines) | Unless specified otherwise, benefit categories are subject to the Overall Annual Limit of R210,500 per insured person |

This policy is not a medical scheme and the cover is not the same as a medical scheme. This policy is not a substitute for medical scheme membership.



Features



Cover Explained

Premiums

Member Service Portal

Terms & Conditions



Your Extender Cover

A QUICK SUMMARY



Features

[Cover Summary](#)

[Cover Explained](#)

[Premiums](#)

[Member Service Portal](#)

[Terms & Conditions](#)



BENEFIT CATEGORY	EXTENDER COVER BENEFIT DESCRIPTION	2025 BENEFIT AMOUNTS AND LIMITS	
		Gap ^{MAX}	Gap ^{CORE}
Casualty Cover	We cover emergency treatment at a casualty facility resulting from an accident We cover emergency illness treatment in a casualty ward for children under 12	R19,000 per event R3,400 per event Max 2 pppa	R15,000 per event R2,400 per event Max 2 pppa
	If the accident was a sports injury, we will also cover shortfalls on rehabilitation consultations at a physiotherapist/biokineticist/chiropractor	R780 per consult Max 6 per event	R540 per consult Max 6 per event
Travelling Abroad	We cover the excess on your international travel insurance for medical emergencies	R4,000 per departure	R3,000 per departure
Cancer Diagnosis	We will pay a once-off lump sum on a first lifetime diagnosis that is made after policy inception and the expiry of all waiting periods [‡]	Stage 1 – R7,000 Stage 2 – R20,000 Stage 3 – R30,000 Stage 4 – R50,000	Stage 1 – R5,000 Stage 2 – R15,000 Stage 3 – R25,000 Stage 4 – R40,000
	If after diagnosis you upgrade your medical scheme benefit option at the first opportunity, we will provide a waiver for the additional medical scheme contributions [*]	R4,800 pm for 12 Months	R4,800 pm for 12 Months
Extra Cover	For an admission resulting from an accident and the admission is 3 days or longer We will pay a daily lump sum: Tier 1 from day 1 to 7 and Tier 2 from day 8 to 28	Tier 1 = R180 per day Tier 2 = R1,800 per day	Tier 1 = R120 per day Tier 2 = R1,200 per day
	We pay a lump sum for a birth that is 42 days or more premature	R22,000 per event	R16,000 per event
Accident Cover	In the event of accidental death or permanent disability caused by an accident If the event is a direct result of a proven crime, above benefit doubles [‡]	R24,000	R18,000 per person
Waiver Cover	In the event of accidental death or permanent disability of the principal member or spouse, we will cover the medical scheme contributions and gap cover premiums for 6 months	R8,400 pm - medical aid 100% on policy	R6,000 pm - medical aid 100% on policy
Trauma Cover	If an insured is a witness to or a victim of a violent crime, we will cover sessions with a counselling therapist	R1,000 per session Max R11,000 pppa	R800 per session Max R8,000 pppa

[‡] - Skin cancer is excluded (except melanomas of stage 2 or more) and benefit ceases at age 65 | ^{*} - If no upgrade is undertaken, no benefit is payable. To qualify, the upgrade must be to the richest benefit option on the scheme or other benefit option as agreed upon by Cinagi. If the member downgrades within 12 months of upgrading, the monthly benefit ceases at the time of the downgrade. Upgrading is subject to the rules of the medical scheme | [‡] - max 2 insured persons per event | pm = per month | pppa = per policy per annum |

Your Cover EXPLAINED



GAP COVER

SPECIALIST COVER

If you are admitted to hospital or receive care for approved oncology treatment, your medical scheme may only refund you a portion of what your specialists and surgeons charge for their services. When this happens, we will provide additional cover to pay for these shortfalls

ONCOLOGY CO-PAYMENT COVER

We cover 3 different categories of shortfalls for oncology. Across all 3 categories, we include cover for modern biological and precision drugs approved by your medical scheme:

- The 20% co-payment applied on all oncology costs
- The 25% or 50% co-payments applied on Precision Cancer Medicines
- Co-payments applied to medicines approved as an ex-gratia benefit by your medical scheme

UPFRONT PAYMENTS

If your medical scheme has fixed-value upfront payments on MRI/CT/PET scans, in-hospital endoscopes, in-hospital basic dentistry or defined approved surgical procedures, we will cover these in full. We also provide you with cover for co-payments applied as a percentage of medical costs and where you voluntarily make use of a non-network hospital or day clinic

LIMIT EXTENDER

Should your medical scheme impose a rand limit on internal prosthetic devices (e.g. joint replacements, spinal fusions, pacemakers, etc), we will provide additional cover per procedure. Additional cover is also provided for sub-limits on MRI/CT/PET scans, endoscopes and lens implants

MATERNITY COVER

We cover tariff shortfalls on consultations with a gynaecologist during the 2nd and 3rd trimester and gynaecologist or paediatrician consultations up to 90 days after birth

EXTENDED COVER

CASUALTY COVER

For an emergency caused by an accident, we will cover you for x-rays, scans, blood tests medicines and fees of attending doctors at a casualty facility

SPORTS COVER

If your treatment at a casualty facility was the result of a sports accident, we will also cover shortfalls on follow-up rehabilitation consultations for physiotherapy or chiropractic treatment

TRAVEL COVER

Covers the excess payable on your international travel insurance for medical emergencies while travelling outside the country

CANCER DIAGNOSIS

If you are diagnosed with cancer for the first time after joining and expiry of any waiting periods, we will pay you a once-off lump sum to assist with any associated non-medical costs. We will also cover the cost of the additional medical scheme contributions if you upgrade your medical scheme option

EXTRA COVER

If you are admitted to hospital for 3 days or more after an accident we will pay you a lump sum per day for up to 28 days. If you have a baby that is born 42 days or earlier than your original expected due date, we will pay you a lump sum

ACCIDENT COVER

For accidental death/permanent disability of an insured a lump sum is payable - if caused by crime the benefit doubles

WAIVER PROTECTOR

Pays your medical scheme and gap cover for 6 months on accidental death/permanent disability of main member or spouse



Features

Cover Summary

Cover Explained

Premiums

Member Service Portal

Terms & Conditions



Monthly Premiums

PRIVATE INDIVIDUALS - 1 JANUARY 2025

Your Monthly Premiums EXPLAINED

Cinagi premiums are structured on the entry age of the oldest person joining the policy as well as the family size.

Our integrated Cover Pay Level (CPL) structure also recognises if you are on a richer medical scheme benefit option. If your benefit option covers medical specialists for in-hospital treatment at 200% or more of scheme tariff, then the CPL-200 premiums will apply to your cover. If the in-hospital medical specialist cover is at 100% of scheme tariff, then the CPL-100 premiums will apply.

Use our easy online premium calculator and join in less than 3 minutes:

Click here

www.cinagi.co.za/get-a-quote
www.cinagi.co.za/application-form



PRIVATE INDIVIDUALS		Gap ^{MAX}			Gap ^{CORE}		
Cover Pay Level	Entry Age	Principal	Adult	Child	Principal	Adult	Child
CPL-200 If your medical scheme cover is 200%	< 30	235	153	66	221	144	62
	30-39	250	171	66	235	161	62
	40-49	274	193	66	258	182	62
	50-64	349	259	66	329	244	62
	65+	744	527	66	701	497	62
CPL-100 If your medical scheme cover is 100%	< 30	302	207	102	282	193	95
	30-39	318	225	102	297	210	95
	40-49	339	243	102	316	227	95
	50-64	485	345	102	453	322	95
	65+	873	619	102	815	578	95

Important Notes

- The Cover Pay Level (CPL) is the percentage of the medical scheme tariff level at which your benefit option covers in-hospital medical specialists. Your premium and benefit calculations depend on the CPL
- Only your spouse and/or children are eligible as dependents on this policy and you must all be covered under the same medical scheme membership
- You or your spouse can be the principal member on your Cinagi policy
- A spouse dependent will be charged adult premiums

- Child dependents will be charged child premiums until they turn 27 and a maximum of two children will be charged per family
- From 27 years all children are charged adult premiums
- The Entry Age category is determined by the oldest person covered under your policy
- Premiums include VAT, broker commission and administration fees
- Premiums are adjusted on 1 January of each year in line with medical inflation
- Premiums are deducted in advance by debit order on the 1st working day of each month



Features

Cover Summary

Cover Explained

Premiums

Member Service Portal

Terms & Conditions



Member Portal

To ensure efficient, quick and user-friendly client servicing, Cinagi has developed a bespoke digital member portal for all clients. To access the portal, please [click here](#).

Through this member portal you can undertake the following administrative services:

SUBMIT A CLAIM – Claiming is a quick and simple online process. You will require the following information/documents to submit your claim:

- The relevant account from the doctor or provider
- The claims statement from the medical scheme showing how they have processed and paid for the above account – this can be downloaded from your medical scheme's website/portal
- If your claim relates to a hospital admission, we will need the first 2-3 pages of the hospital account showing the admission/discharge dates, ICD-10 codes, patient name, etc

CLAIM OPTIMISER – if you are required to pay an upfront payment before being admitted to hospital, we have developed the Claim Optimiser, which guarantees the payment directly to the hospital. This means that you do not need to make any out-of-pocket payments and we will pay the provider directly on your behalf. Please note that this service is not available if your policy is still subject to a waiting period and you will need to contact us at least 72 hours before your admission to activate the Claim Optimiser.

UPDATE YOUR DETAILS – you can update any of your personal details here such as contact details, debit order details, your medical scheme cover and the addition/removal of policy dependents.

UPGRADE YOUR GAP COVER POLICY – if you are on the **Gap^{CORE}** policy, you can upgrade to the **Gap^{MAX}** policy which provides you with enhanced cover.

GET A COPY OF YOUR POLICY – you can download a copy of your policy document and/or a confirmation of your cover with us.

GET A QUOTE – If you are not yet a Cinagi member, you can get quotes for both the **Gap^{CORE}** and **Gap^{MAX}** policies.

Visit www.cinagi.co.za/gapcover for more information

Please visit www.cinagi.co.za/contact to Access Our Digital Contact Channels



Features

Cover
Summary

Cover
Explained

Premiums

Member
Service Portal

Terms &
Conditions



Our Terms & Conditions

EXPLAINED

MONTHLY PREMIUMS

- If you change medical schemes or upgrade/downgrade your benefit option, you must notify us immediately to ensure that you are on the correct Cover Pay Level. Your premium may change depending on your new Cover Pay Level
- If you add beneficiaries to your medical scheme you must notify us immediately to ensure that they are registered and that the correct premiums are applied
- The Entry Age Category is based on the oldest person on your policy at the time of inception - once on cover you remain in the same category
- If you later add a dependent to your policy that is in an Entry Age Category that is higher than the current Entry Age Category, then the new Entry Age Category will apply to the policy from the date that the new dependent is added
- A maximum of two children will be charged per policy until they are 24 years old
- Adult premiums will apply to all child dependents from age 24 onwards – the higher premium will automatically apply from the month after they turn 24
- To qualify for benefits under this policy, you and your dependants must be registered on the same medical scheme membership where either you or your spouse are the principal member
- Once any dependent on your policy comes off either your or your spouse's medical scheme membership, they will no longer be covered under this policy (they have the option of applying for their own Cinagi policy at such stage)

WAITING PERIODS

- A 3-month general waiting period applies on all claims except for accidents
- A 12-month waiting period applies on all claims directly or indirectly related to the treatment of scopes (which include minimally invasive scopes, endoscopies, arthroscopies and hysteroscopies), endometrial ablations, hysterectomy, pregnancy and childbirth, cholecystectomy, wisdom teeth, dental treatment, cataracts, reflux surgery, tonsillectomy, grommets, adenoidectomy, nasal procedures, hernia procedures, joint replacements and spinal surgery
- A 12-month waiting period applies on any claims relating directly or indirectly to:
 - Any pre-existing medical condition you or any of your dependants had at the policy inception, or
 - Any advice, diagnosis, care or treatment you or any of your dependants received or was recommended to receive within the 12 month period prior to the policy inception
- Waiting periods apply to new dependants added to your policy after inception
- If you previously had a gap cover policy with similar benefits, with less than 90 days between the time you ended that policy and activated your policy with us, a 3-month general waiting period and/or the unexpired portion of any previous 12-month waiting period will apply



Features



Cover
Summary



Cover
Explained



Premiums

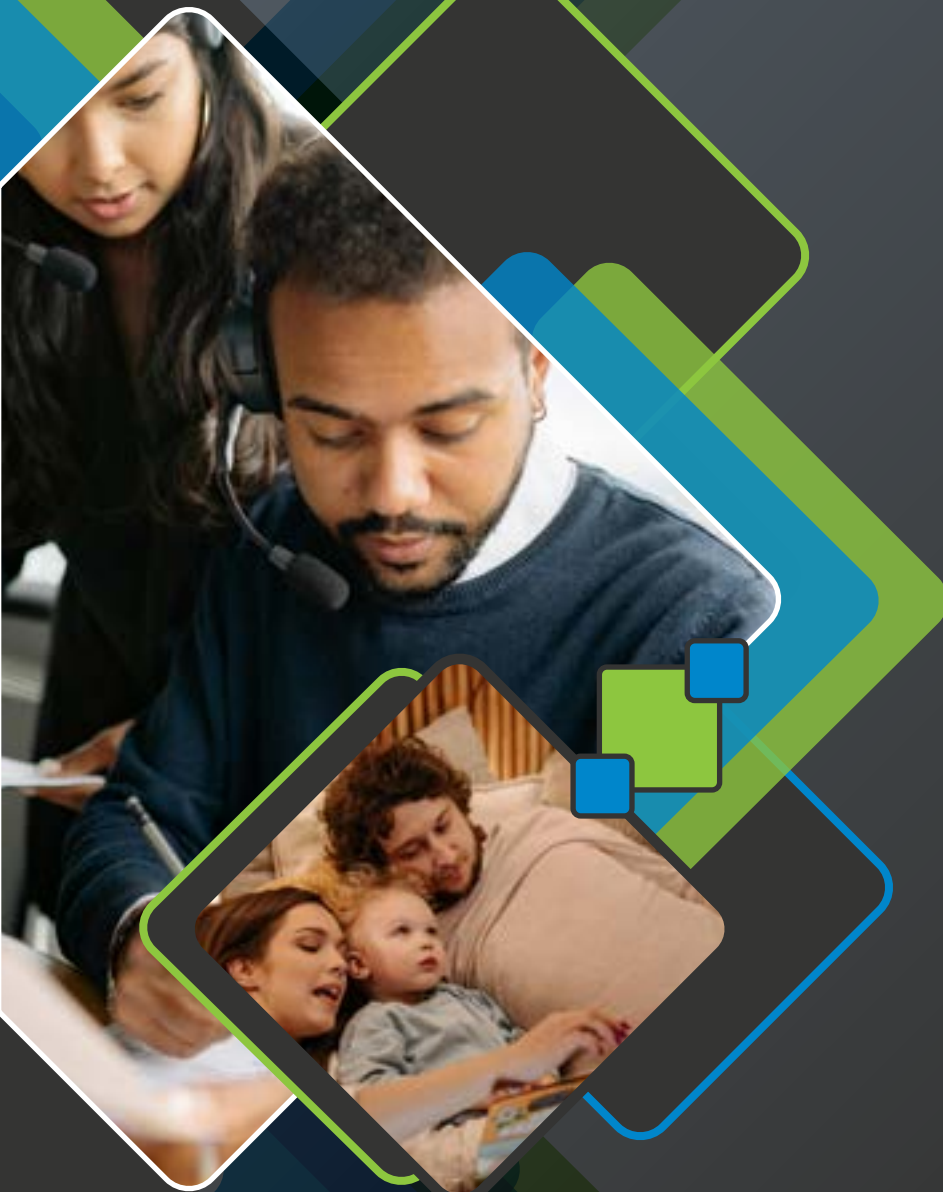


Member
Service Portal



Terms &
Conditions





GAP COVER EXCLUSIONS

- Gap Cover can only cover shortfalls on medical costs. Where a medical scheme excludes treatment, gap cover cannot provide any cover
- Any claim for which your medical scheme has limited the benefit or imposed co-payments because the scheme does not recognise the clinical efficacy or validity of the related procedure or treatment
- Any claim for specialised dentistry or elective maxillofacial surgery, eg bridges, implants, frenectomy, orthognathic surgery, etc. (This does not apply to basic in-hospital dentistry, such as wisdom teeth extractions or fillings for young children)
- Any co-payment, deductible or limitation applied to the medical scheme benefits as a penalty for non-adherence to the medical scheme rules or voluntary use of a non-network provider
- Any claim relating to weight-loss or bariatric surgery
- Any claim submitted more than 4 months after date of treatment
- Claims not recognised as medically necessary or paid as an ex-gratia / concession
- Experimental, unproven or unregistered treatments, medicines or practices
- Any claim that is incurred outside of South Africa (excl Travel Cover)
- Any claim that arises from a service provider and/or medical scheme not complying with prevailing legislation
- Casualty Accident Cover applies only to emergency treatment at a casualty facility within 12 hours of an accident, and excludes appliances, prosthetics and any subsequent treatment after the initial emergency visit to the casualty facility
- Shortfalls on hospital accounts, day clinics, step-down facilities or diagnostic services (pathology and radiology), other than co-payments/upfront payments shown on the benefit schedule
- Casualty Illness Child Cover applies only to emergency treatment for a child younger than 12 at a casualty facility after hours (Mon-Fri between 6pm and 8am plus any hours of a weekend or public holiday) - excludes appliances, prosthetics and any subsequent treatment after the initial visit to the casualty facility

This policy is not a medical scheme and the cover is not the same as that of a medical scheme. This policy is not a substitute for medical scheme membership.

This brochure is a summary of Cinagi Gap Cover – please read the policy document for full details or contact us at www.cinagi.co.za/contact for more information.



Features

Cover
Summary

Cover
Explained

Premiums

Member
Service Portal

Terms &
Conditions





Cinagi

2025 | Gap Cover

UNDERWRITTEN BY



Cinagi is an authorised financial services provider (FSP 50104). Gap cover is underwritten by Anfiniti Insurance Limited, a licensed non-life insurer and an authorised financial services provider (FSP 35914).